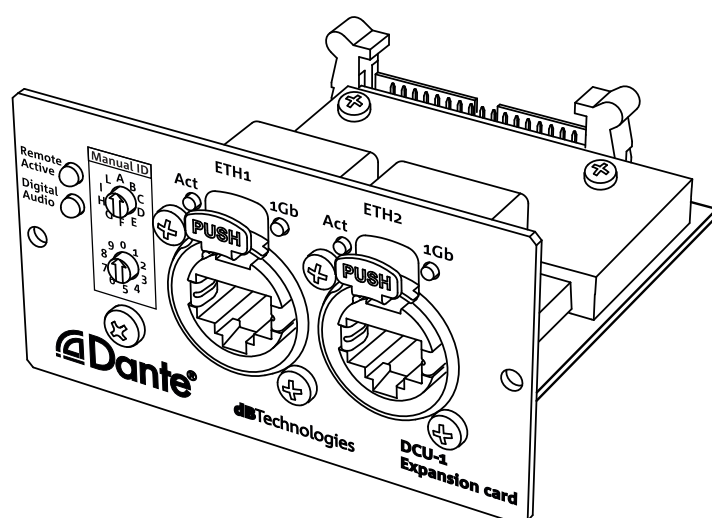


DCU-1 EXPANSION CARD



MAIN FEATURES

- Multichannel audio and AURORA Net control over single Ethernet Cable
- Two port for Gigabit daisy chain connection
- Low latency, compensated in each receiver
- Dante controller software for setting up the Network
- Compatible with all dBTechnologies devices with removable card on board

PACKAGE CONTENTS

The box contains:

- n.1 DCU-1 expansion card
- This quick start and warranty documentation

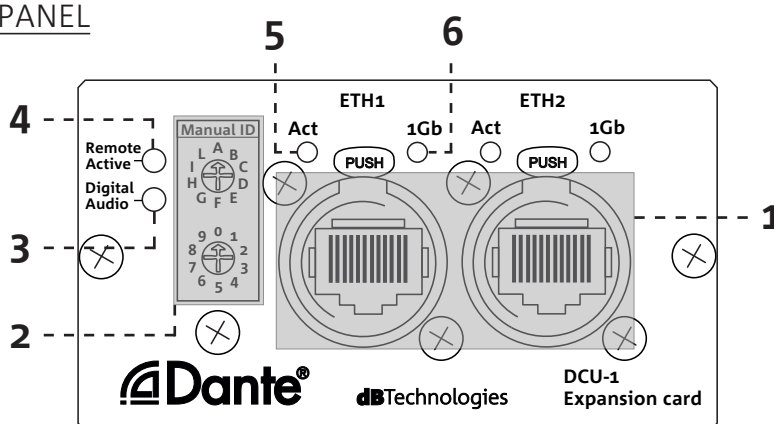
DESCRIPTION

DCU-1 expansion card provides an interface to the Dante™ network and distributes signals between dBTechnologies devices with dedicated expansion card, Computers and 3rd party Dante™ enabled equipments.

Dante™ is an high performance, multi-channel, industry standard digital media transport system developed by Audinate that runs over standard IP networks.

Using Dante™ Controller, a software app provided by Audinate, the user can update the firmware of the card, configure and route audio across Dante™ devices in the network while AURORA Net allows the full control (including audio input configuration) of dBTechnologies devices.

I/O AND CONTROL PANEL



1. *EtherCon (RJ45) ports* - use these two ports in fixed switched configuration (Dante™ redundancy mode not supported) for Dante™ digital audio streaming and AURORA Net control via software. Please use F/UTP or S/FTP shielded cables (CAT5e minimum).
2. *Manual ID* - use the combination of these rotary encoders to manually assign an ID to the connected devices. This address is used by AURORA Net software for a quick arrangement of devices (as RNet routing ID). More info in AURORA Net user manual, Dante™ section.
3. *Digital Audio* - this LED signal that digital audio inputs are selected.
4. *Remote Active* - this LED signals that all the local controls on the amplifier panel are bypassed by AURORA Net and remote configurations are applied.
5. *Act* - this LED will start flashing to indicate the network activity on a specific port.
6. *1Gb* - this LED signals that a Gigabit connection has been established.

QUICK CONFIGURATION GUIDE

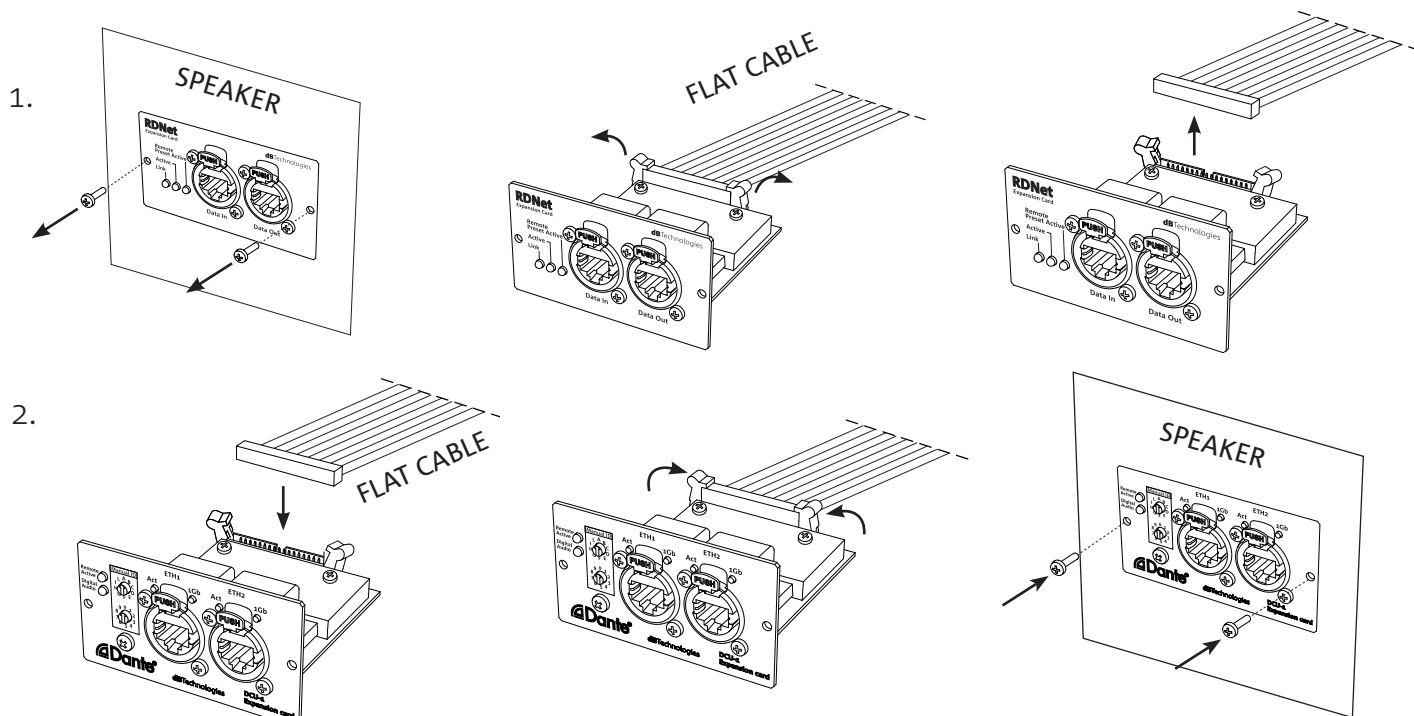
CARD INSTALLATION AND FIRMWARE UPDATE

1. The speaker must be switched off before operating. Remove the optional card from the speaker unscrewing the screws and unplugging the flat cable as shown.
2. Plug the flat cable to the DCU-1 expansion card as shown and fasten screwing the screws.
3. Update the firmware of the speaker via USB connector installing the latest Dante™ available version (download it from the speaker product page at dBTechnologies website).



WARNING!

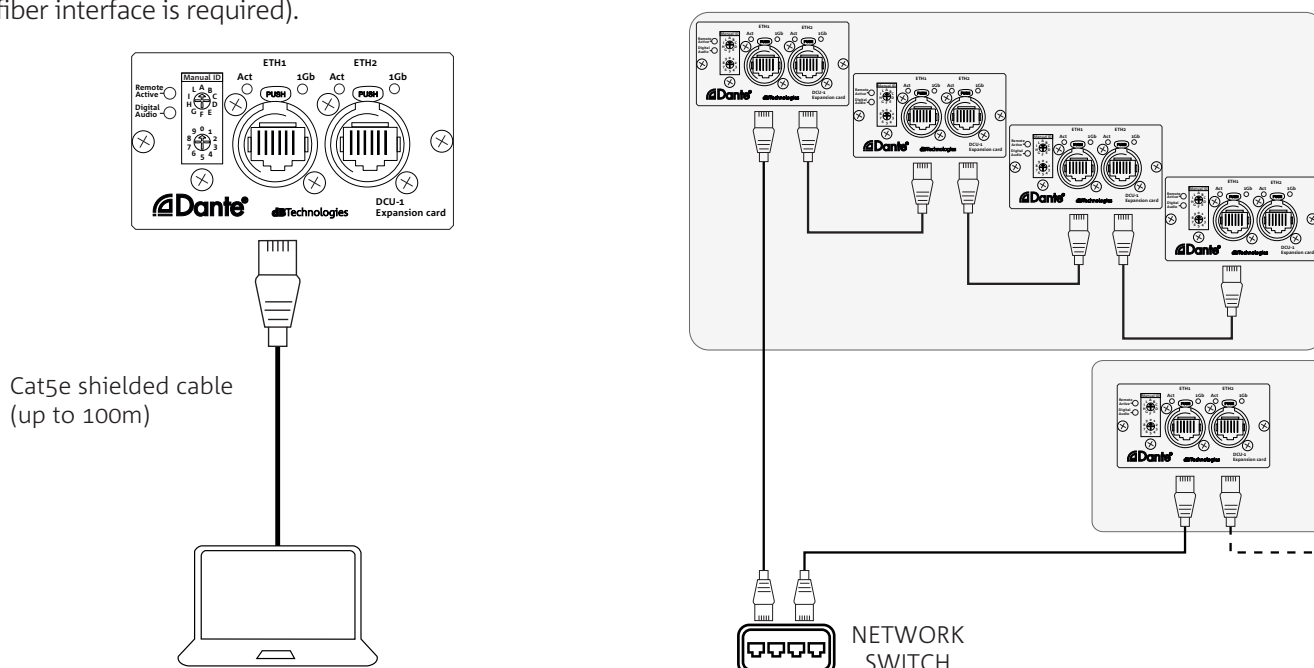
Please be careful when handling the expansion card to avoid the risk of electrostatic discharge.



NETWORK SETUP

Connect your dBTechnologies Dante™ device, PC or Mac running Dante™ Controller and AuroraNet over an Ethernet network using at least CAT5e shielded cables up to 100m (for longer distances an optical fiber interface is required).

Using a network switch allows to connect up to 4 dBTechnologies devices in daisy chain configuration for each port; use more network switches to connect multiple devices. Please use a good quality Gigabit switch that supports Diffserv (DSCP) and quality of service (QOS). For more information refer to Audinate website.



DANTE CARD CONFIGURATION

Once the system is connected and powered up, open the “Device View” page in Dante Controller software and select your Dante card.

Dante card requires a unique IP address automatically allocated or manually configured. For most setup, Dante cards and devices can be automatically set up (default).

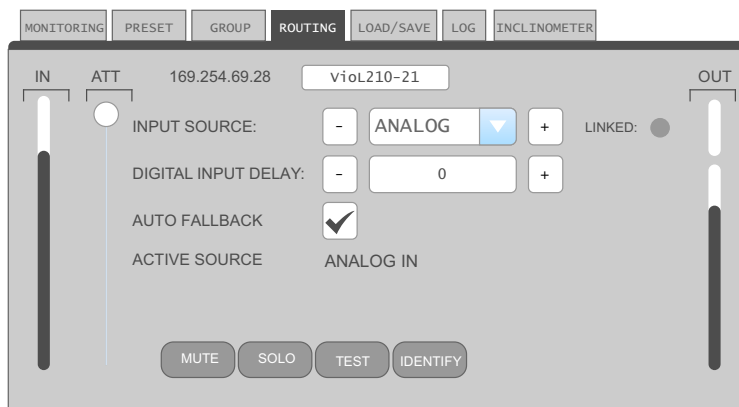
When connecting another network on Dante, for example AURORA Net on a dedicated PC, please be sure that all the devices have a unique but compatible IP address.

Use Dante Controller to route audio between Dante product. For more information refer to Audinate website.

SELECT INPUT SOURCE

Use AURORA Net software to select a preferred audio source. By default, dBTechnologies Dante enabled products set an higher priority to Dante inputs: if a Dante stream is assigned to the device, it is automatically selected.

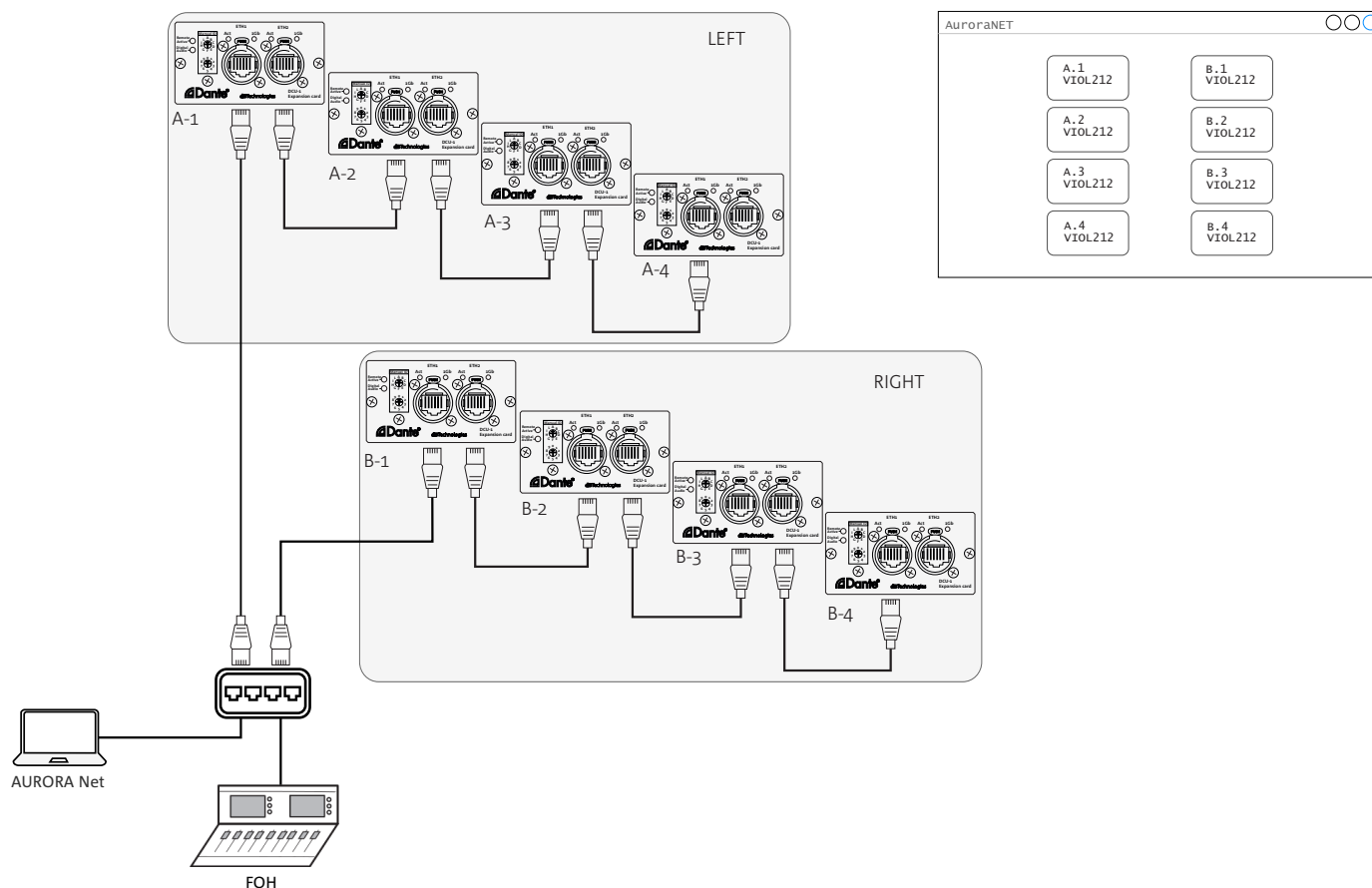
For further configurations, refer to AURORA Net manual, Dante section.



BASIC SYSTEM SETUP

Below an example of a network configuration.

Setting the manual ID routing is optional: it allows to quickly match physical devices to software.



IMPORTANT NOTES AND WARNINGS

EMI CLASSIFICATION

According to the standards EN 55032 and 55035 this is a Class A equipment, designed and suitable to operate for professional use. Warning: This equipment is compliant with Class A of CISPR 32. In a residential environment this equipment may cause radio interference.

FCC CLASS A STATEMENT ACCORDING TO TITLE 47, PART 15, SUBPART B, §15.105

This equipment has been tested and found to comply with the limits for a Class A digital device, pursuant to part 15 of the FCC Rules.

These limits are designed to provide reasonable protection against harmful interference when the equipment is operated in a commercial environment.

This equipment generates, uses and can radiate radio frequency energy and, if not installed and used in accordance with the instructions, may cause harmful interference to radio communications.

Operation of this equipment in a residential area is likely to cause harmful interference in which case the user will be required to correct the interference at his own expense.

Changes or modifications not expressly approved by the party responsible for compliance could void the user's authority to operate the equipment.

WARNINGS!



Make sure that the device is securely installed in a stable position to avoid any injuries or damages to persons or properties. Before installing the device check all the components for damages, deformations, missing or damaged parts that may compromise safety during installation. Follow the instructions contained in this quick start user manual and on the complete user manual to properly install the device. It's suggested to keep enough distance from other devices to allow the right cooling.

The warnings in this manual must be observed in conjunction with the "USER MANUAL - Section 2".

Features, specification and appearance of products are subject to change without notice. dBTechnologies reserves the right to make changes or improvements in design or manufacturing without assuming any obligation to change or improve products previously manufactured.

Only expert personnel may use the product and its accessories! Only use the accessories and configurations described in this manual, and proceed in accordance with the instructions given in the manuals for the accessories.

Only use the power cable provided.

The USB SERVICE DATA connection is to be used exclusively for updating the product's firmware; do not connect any other USB device to the unit to avoid the risk of damage and malfunction.

Check periodically the integrity and the functionality of the accessories and the technical equipments for a safe installation. user should never apply a load that exceeds the working load limits of any rigging components or equipment here presented. design, calculation, installation, testing and maintenance of suspension and stack systems for audio equipment must be performed only by qualified and authorized personnel. AEB Industriale s.r.l. denies any and all responsibility for improper installations, in the absence of safety requirements.



A.E.B. Industriale Srl
Via Brodolini, 8
Località Crespellano
40053 VALSAMOGGIA
BOLOGNA (ITALIA)
Tel. +39 051 969870
Fax +39 051 969725

www.dbtechnologies.com
info@dbtechnologies-aeb.com