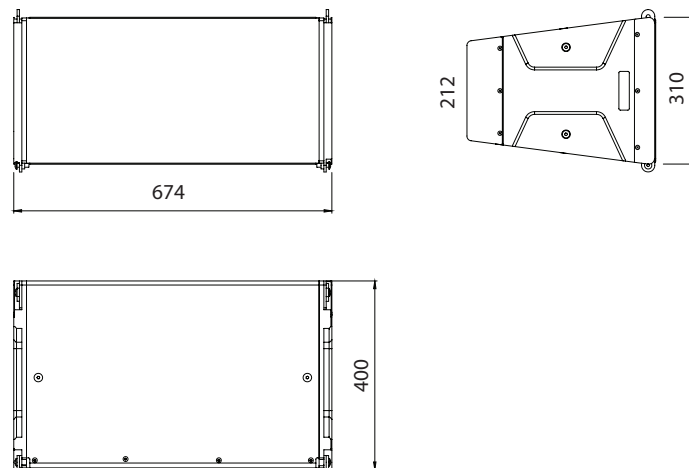


IS210L

2-way Passive Line Array Module



MAIN FEATURES

- High professional acoustic performance
- Premium components
- Touring inspiration
- Maximum configurability in stacking or hanging
- IP55 certification
- Maximum resistance to weather agents
- Available in black or white

DESCRIPTION

IS210L is the first IS line array dedicated to installations. Designed with a symmetrical configuration with 2 10" woofers and a 2.4" driver on a waveguide, it is the first complete passive system bringing the capabilities of a high-quality line array to large environments such as arenas, performing arts center, houses of worship, multifunctional venues, clubs. With a hanging system equipped with hidden and immediate mechanics, the system is easy to configure and has a minimal, elegant, and clean line array design. Protected by a IP55 certification, IS210L is perfect for indoor and outdoor contexts. The variety of its connections allows all installers to benefit from maximum versatility and adaptability.

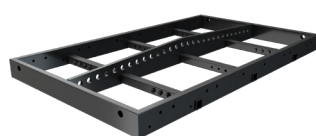
| | |
|-----------------------------------|--|
| Speaker Type | 2-way Passive Line Array Module |
| RMS Power | 400W (LF: 300W HF: 100W) |
| Peak Power | 800W (LF: 600W HF: 200W) |
| Usable bandwidth [-10 dB] | 57 Hz - 18,700 Hz |
| Frequency Response [-6 dB] | 65 Hz - 17,500 Hz |
| Impedance | 8 Ohm |
| Sensitivity 1W@m | 102.4 dB |
| Max SPL | 133 dB |
| HF | 1x 1.4" (exit), 2.4" v.c. |
| LF | 2x 10", 2.5" v.c. |
| Dispersion | 90x15° [H x V] |
| X-Over Frequency | 900 Hz (internal X-Over) |
| Connections | Screw terminal block (LF+ LF- HF+ HF-) |
| Housing | Plywood, water-painted coating |
| Rigging points | flyable with bracket |
| IP rating | IP 55 |
| Width | 675 mm (26.57 in) |
| Height | 310 mm (12.2 in) |
| Depth | 400 mm (15.75 in) |
| Weight | 29.2 Kg (64 lbs) |

ACCESSORIES



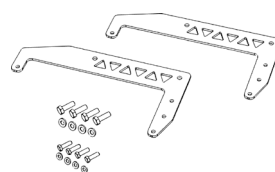
DRK-1

Flybar for VIO X206, IS26T, IS210L, VIO S115 or IS115S. White version available



DRK-2

Multiple flybar for VIO X206, IS210L, IS26T or/and VIO S115, IS115S. White version available



LP-6

Link bracket for IS210L speaker and IS115S subwoofer stack or flown mounting